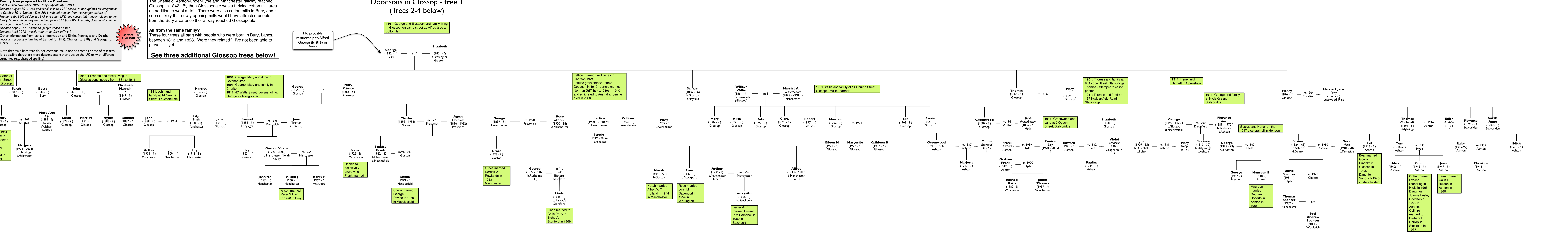


Doodson Family tree c.1800 to Present Day

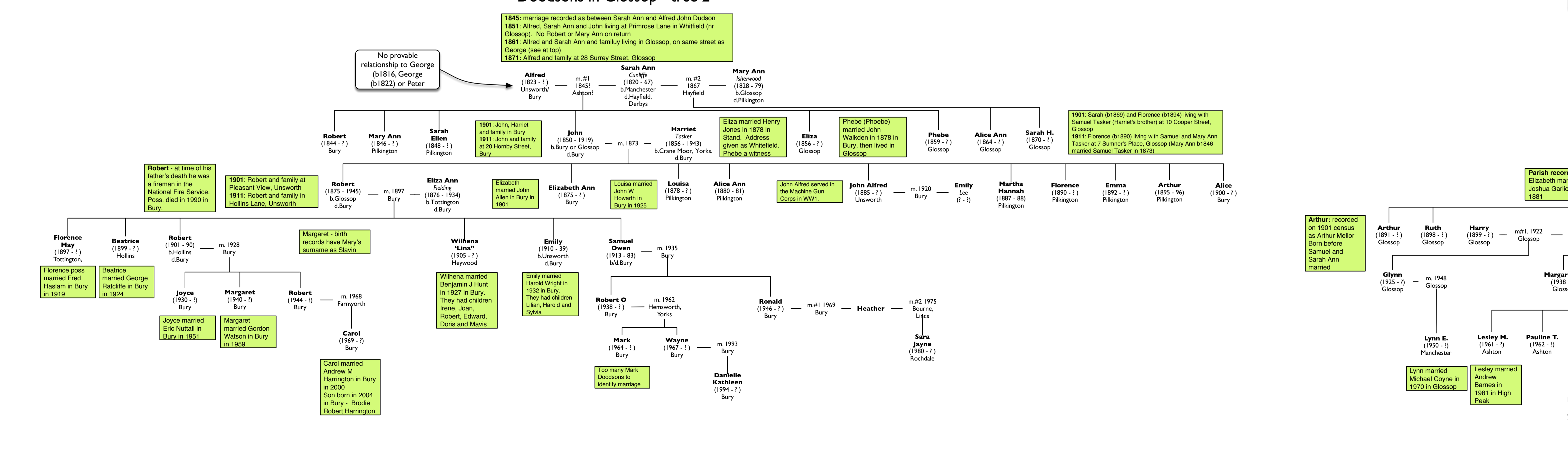
Glossop
Family tree prepared by Mike Doodson,
Initial version November 2007. Major update April 2011
Updated August 2011 with additional links to 1911 census; Minor updates for emigrations in October 2011; Updated Dec 2011 with information from newspaper archive of Hannah's b.1840 suicide in 1873 and other BMD and census information relating to her family; More 20th century data added June 2012 from BMD records; Updates Nov 2014 with information from Spencer Doodson
Updated Sept 2017 - additional people added on Tree 1
Updated April 2018 - mostly updates to Glossop Tree 2
Other information from census information and Births, Marriages and Deaths records - especially families of Samuel (b.1895), Charles (b.1896) and George (b.1899) in Tree 1
Note that male lines that do not continue could not be traced at time of research. It is possible that there were descendants either outside the UK or with different surnames (e.g. changed spelling)

Why Glossop?
The Sheffield, Ashton-under-Lyne and Manchester railway reached Glossop in 1842. By then Glossopdale was a thriving cotton mill area (in addition to wool mills). There were also cotton mills in Bury, and it seems likely that newly opening mills would have attracted people from the Bury area once the railway reached Glossopdale.
All from the same family?
These four trees all start with people who were born in Bury, Lancs. between 1813 and 1823. Were they related? I've not been able to prove it... yet.
See three additional Glossop trees below!

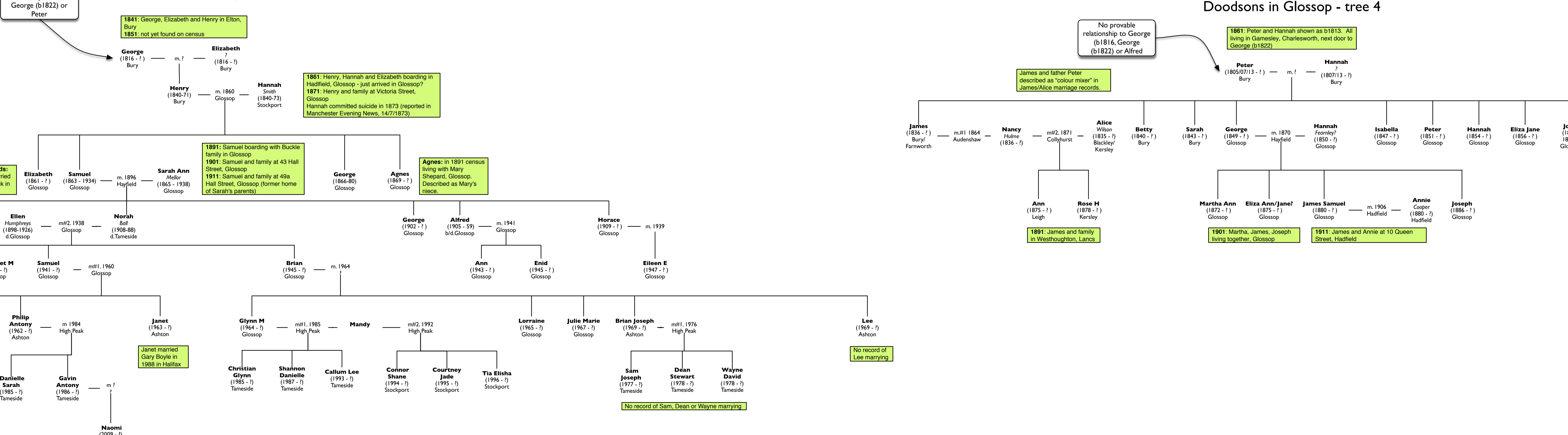
Doodsons in Glossop - tree 1 (Trees 2-4 below)



Doodsons in Glossop - tree 2



Doodsons in Glossop - tree 3



Doodsons in Glossop - tree 4

